



4' Ht. Wooden Picket Fence as shown on plan

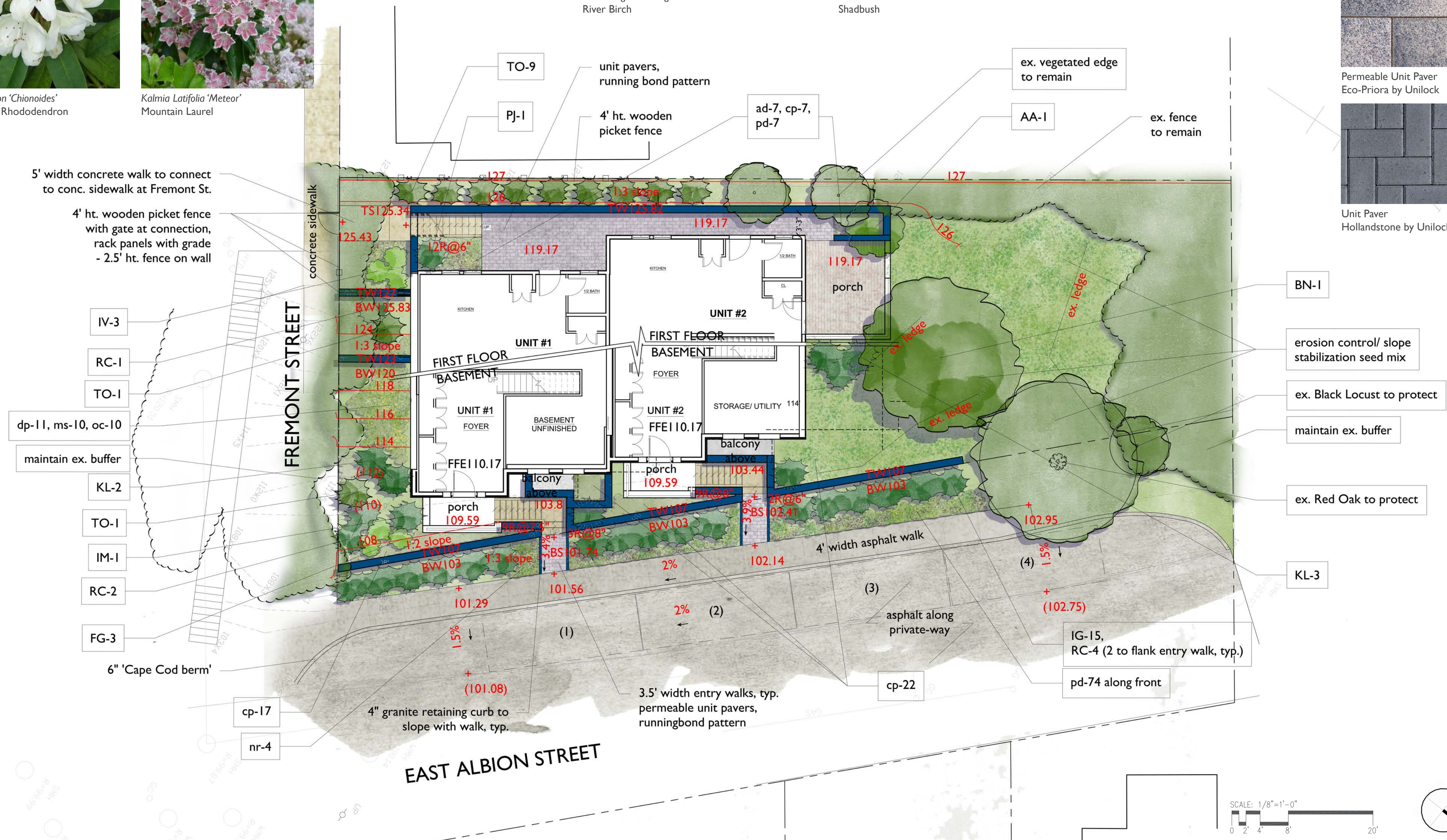


Permeable Unit Paver  
Eco-Priora by Unilock



Unit Paver  
Hollandstone by Unilock

\*13. Tree protection measures shall include the following for the adjacent existing trees along the community trail: Prior to site demolition, temporary 6' ht. chain link fences shall be erected around the tree trunks (location shown on plan). No construction materials shall be stored within temporary chain link fence tree protection. After construction of buildings, and during site work to install plants, remove chain link fence taking care to avoid large roots greater than 4" in diameter.



LANDSCAPE PLAN  
0 FREMONT STREET  
SOMERVILLE, MA  
JUNE 26, 2020



10. DEVELOPMENT STANDARDS
Green Score

Green Score is a performance-based environmental landscape standard measured as a ratio of the weighted value of all landscape elements to the total land area of a lot.

Fremont Street 5,657 SF Total

Table 10.4.1 Green Score Calculation

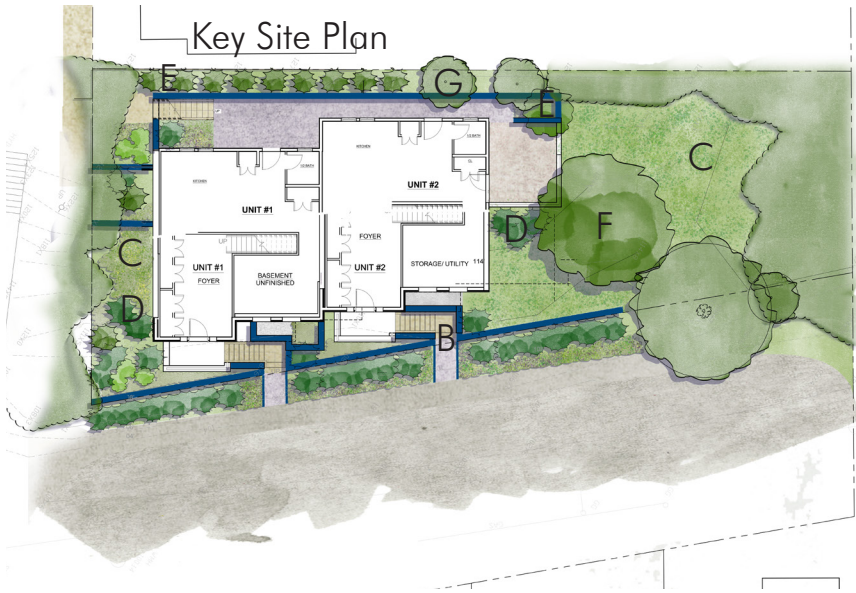
	Credit	Multiplier
Soils		
Landscaped area with a soil depth < 24 inches	actual sf	0.3
Landscaped area with a soil depth => 24 inches	actual sf	0.6
Pervious Paving with 6 to 24 inches of subsurface soil or gravel	actual sf	0.2
Pervious Paving with more than 24 inches of subsurface soil or gravel	actual sf	0.5
Groundcovers		
Turfgrass, mulch, and inorganic surfacing materials	actual sf	0.1
Plants		
Vegetation less than two (2) feet tall at maturity	actual sf	0.2
Vegetation at least two (2) feet tall at maturity	12 sf.	0.3
Trees		
Small Tree	50 sf.	0.6
Large Tree	450 sf.	0.6
Preserved Tree	65 sf.	0.8
Engineered Landscape		
Vegetated Wall	actual sf	0.1
Rain gardens, bioswales, and stormwater PLANTERS.	actual sf	1.0
Green Roof with up to 6" of growth medium	actual sf	0.1
Green Roof with 6"-10" of growth medium	actual sf	0.4
Green Roof of 10"-24" growth medium	actual sf	0.6
Green Roof of over 24" growth medium	—	per individual landscape elements

Key		Multiplier	Bonus	Credit	
A	Soils   Landscaped Area with a soil depth => 24 inches	.6		2,985.1	1,791.1
B	Soils   Pervious Paving with more than 24 inches of subsurface soil or gravel	.5		3	1.5
C	Plants   Vegetation less than two feet tall at maturity	.2	NS .1	2,358.6	707.6
D	Plants   Vegetation at least two feet tall at maturity	.3	NS .1	(18area )12	86.4
E	Trees   Small Tree	.6	NS .1	(11) 50	385
F	Trees   Large Tree	.6	NS .1	(1) 450	315
G	Trees   Preserved Tree	.8		(2) 65	204
	Total				3,490.6
	Green Score Bonus Native Species = NS = .1				

Table 10.4.2 Green Score Bonuses

	Credit	Multiplier
Bonus Credits		
Publicly visible landscape	--	0.1
Native species	--	0.1
High value species	--	0.1
50% of irrigation is harvested rainwater	--	0.1
Food cultivation	--	0.1
De-paved LOT AREA	--	0.1

5. Calculation
- a. GREEN SCORE is calculated as follows:
    - i. Determine total LOT AREA.
    - ii. Calculate the area of each proposed landscape element for each category identified in the first column of Table 10.4.1. Certain types of plantings use the number of individual plants multiplied by an equivalent square footage when indicated in the second column of Table 10.4.1.
    - iii. Multiply the actual square footage, or the equivalent square footage, of each landscape element by the multiplier specified for each landscape element in the third column of Table 10.4.1 plus any bonus on Table 10.4.2 to determine the weighted score of each element.
    - iv. Add the weighted score of all landscape elements together.
    - v. Divide the resulting sum by the area of the LOT to determine the final GREEN SCORE.
    - vi. If necessary, redesign the landscape plan to achieve the required GREEN SCORE.
  - b. BONUSES
    - i. Review Boards may establish additional bonuses



3,490.6 / 5,657 = .62 Green Score